



近接センサー Proximity Sensor

さまざまな金型に対応できる豊富なバリエーションのセンサーヘッドを取りそろえています。

Variety of sensors that meet variety of dies are provided.

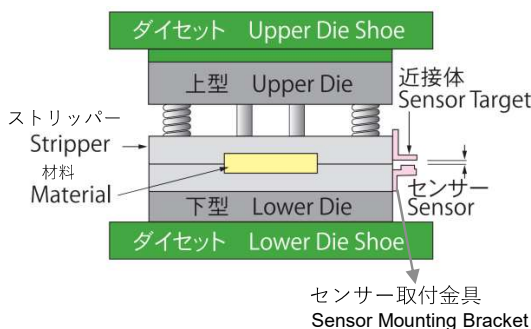
カス上り検出装置 **FIX/MICRON-3** に設置が可能です。
We'll strongly advise the use of this sensor for slug detector.



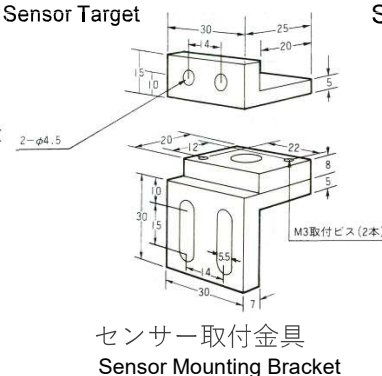
適合中継ケーブル
Junction Cable
型式 Model **3RC(3m) / 5RC(5m)**

型式 Model KS-1010C 検出範囲 Detection distance 0.8~1.8mm		型式 Model KS-1010(H) 検出範囲 Detection distance 0.8~1.8mm	
型式 Model KS-1310 検出範囲 Detection distance 0.5~1.5mm		型式 Model KS-1310S 検出範囲 Detection distance 0.5~1.5mm	
型式 Model MS-1010 検出範囲 Detection distance 0.8~1.8mm		型式 Model KS-1110C 検出範囲 Detection distance 0.8~1.8mm	
型式 Model KS-1210C 検出範囲 Detection distance 0.8~1.8mm		型式 Model KS-1410 検出範囲 Detection distance 0.5~1.5mm	
型式 Model KS-1410S 検出範囲 Detection distance 0.5~1.5mm		型式 Model KS-1510 検出範囲 Detection distance 0.5~1.5mm	
型式 Model MS-2003		ヘッダーマシン用のセンサーもご用意しております。 Sensors for header machines are also available.	

金型への取付図
Installation drawing



近接体
Sensor Target



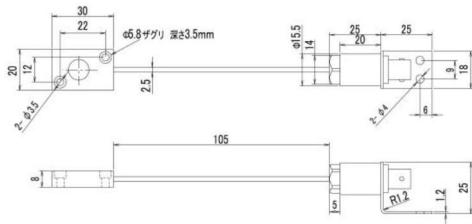
センサー取付金具及び近接体
Sensor Mounting Bracket and Target

型式 Model **JMKS-1**

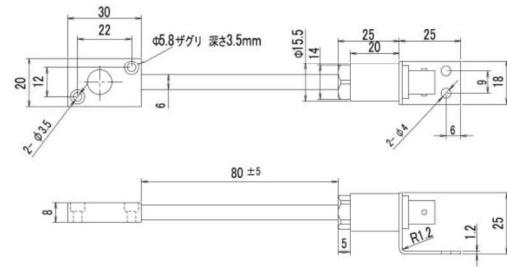


センサー外形寸法図 Dimensions

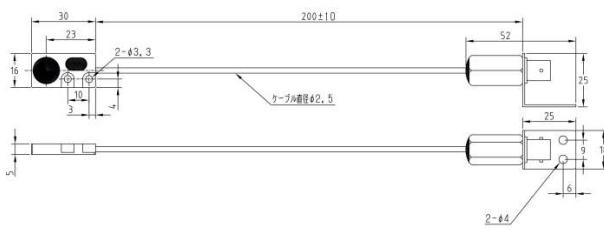
KS-1010 (C)



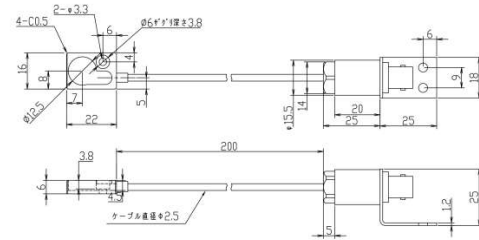
KS-1010 (H)



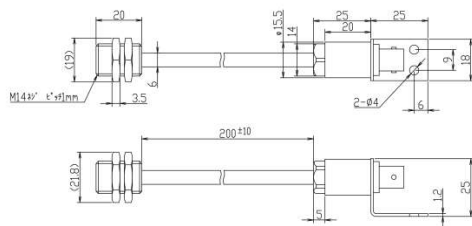
KS-1310



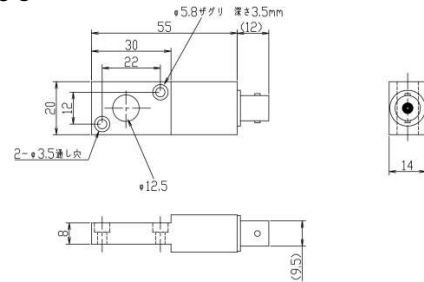
KS-1310S



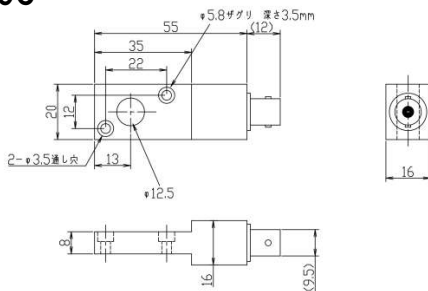
MS-1010



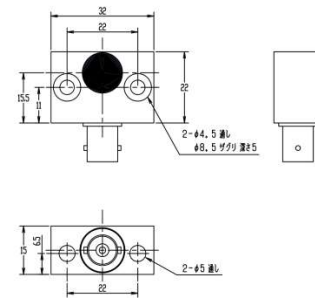
KS-1110C



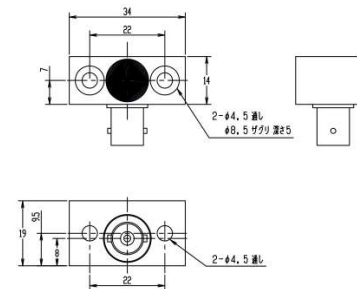
KS-1210C



KS-1410



KS-1410S



KS-1510

